

Follow us on Facebook
[https://
 www.facebook.com/
 csuentensionlogancounty](https://www.facebook.com/csuentensionlogancounty)



Why 4-H Matters....

4-H isn't about winning blue ribbons and showing at county fair. Yes, that's a great side benefit, but 4-H is so much more....

It's about learning how to be responsible through caring for your projects. Its about learning about citizenship through your service to others. It's about learning about trustworthiness by taking on leadership roles and having others count on you. It's about learning about caring by seeing a fellow 4-Her in need and helping them out. It's about learning respect by losing with grace when things don't go your way but knowing it's one person's opinion on one day and it's about learning fairness through being held accountable for your actions or inactions.

4-H is about creating blue ribbon kids in a world that is quickly losing these character traits. It's about giving kids the skills for success, so one day they can make our world a better place.

Horse Project Requirements

In order to participate at the Logan County Fair, you are required to complete state levels testing requirements. The levels program offers 4 divisions: Western, English, Showmanship and Ranch Horse. Each division has 4 levels that can be completed.

In order to compete in Western and English events on Monday, you must pass both a written test to check your knowledge and what you have learned in the program, along with a riding test done by a certified rater to check your riding ability for level 1. Because 4-H is about learning, and not just participating, both aspects are important.

In order to compete in the speed

events (gymkhana) on Tuesday, you must be a western level 2. This will require a second written and riding test.

In order to compete in the Ranch Horse and cattle (roping) classes on Tuesday, you must test in the Ranch Horse division to level 2.

There is only one written test to take for every level which covers every division. However, the riding tests for each level in each division are different. You may look at the requirements for each riding test by going to www.colorado4h.org/project_resources/clover_guide/psq-livestock/horse/horse-levels-testing.php

You must use a certified rater for riding tests. Contact Kacy for a list of raters in the area. Written tests must be taken in the Extension Office. You may take the tests at any point in the year. Testing in the fall is highly recommended. However, July 7 is the last day to submit tests to the Extension Office to determine which levels you are at, which will determine which classes you can compete in at the 2017 Logan County Fair.

*Levels 1 and 2 of each division may be completed in county. The state requires levels 3 and 4 be tested outside the county.

Logan County Extension

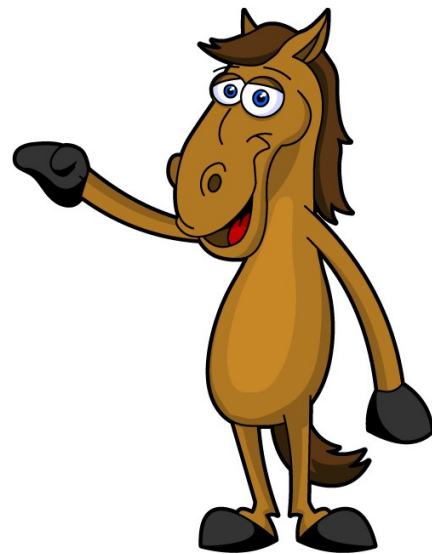
To Make the Best Better



Logan County Extension
 508 S. 10th Ave. Ste 1
 Sterling, CO 80751

Phone: 970-522-3200 Ext 4
 Fax: 970-522-7856
 E-mail:
kacy.atkinson@colostate.edu

Please make sure you add Kacy's email address to your contact list, as that is how she sends out information by project area and it's important you receive it!



Anyone can request Kacy come do a project visit in the spring/summer for help or advice, otherwise project visits are done at random, and you may get a call so she can come meet and get to know you!

Logan County 4-H Livestock Program

Project Areas

The Livestock Project Area includes the following projects:

Breeding and Market Beef

Market Goat

Horse

Breeding and Market Poultry

-Chickens

-Turkeys

-Ducks

Breeding and Market Rabbit

Market Sheep

Market Swine

Kacy Atkinson is the county agent in charge of the livestock program.

For the 2016-2017 4-H year, these are requirements that will affect livestock project areas.



Completion Requirements

For members in these areas, the following is required in order to have a "complete" project and remain a member in good standing.

- ◆ Member must complete a record book and score a minimum of 70%.
- ◆ Member must complete 2 community service projects. Community service does not include charitable donations, or efforts on behalf of 4-H.

Community service is hours spent in service to another individual or organization outside of 4-H or money specifically raised on behalf of someone/thing else and donated directly to them without any benefit to the club or 4-H member.

- ◆ Member must do a demonstration for the club.
- ◆ Member must have a

completion activity. County Fair is the most common completion activity. If a member cannot attend fair for personal reasons or fair ineligibility, call Kacy for alternatives on how to complete your project.



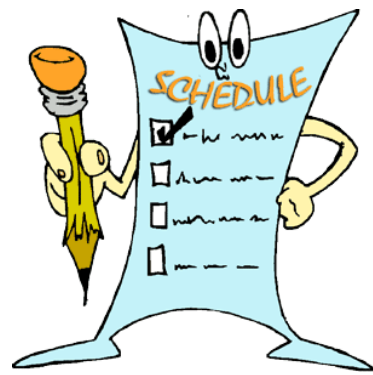
Logan County Extension

Key Areas

- > Completion Requirements
- > Seminar Schedule
- > Ownership Deadlines
- > Meat Quality Assurance
- > Record Books
- > Double Check Enrollment!
- > Catch-It
- > Horse

Inside this issue:

Seminar Schedule	2
Ownership Deadlines	2
MQA/PQA	2
Record Books	3
Enrollment	3
Catch-It	3
Horse Project	4



Seminar/Event Schedule

*dates subject to change

November 17-6:30 pm- Beef Seminar	March 9-6:30 pm- Goat Seminar	April 27-6:30 pm- E-Record Book
February 4-7:00 am- Beef Weigh-In	March 27-6:30 pm- Agvocacy	April 28-5:00 pm Swine Nominations
February 23-6:30 pm- Swine Seminar	March 30-6:30 pm- Quizbowl-Seniors Only	April 29-7:30-10:00 am- Sheep/Goat Weigh In
March 2-6:30 pm- Sheep Seminar	April 6-4:00-7:00pm- MQA/PQA	May-July-varied Project Visits
March 6-6:30 pm- Public Speaking	April 20-6:30 pm- Large Animal Nutrition	July 14-5:00 pm- Fair Entries Due

Be fearless
in the
pursuit of
what sets
your soul
sets your
soul on fire

Ownership Deadlines

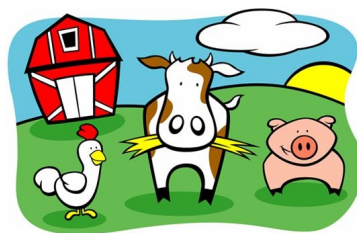
Market Beef-February 4 deadline.
Sheep and Goats-April 29
Breeding beef, chickens and rabbits-May 1. Animals will be nominated in 4-H Online. You must submit pictures and proof of ownership. Beef require a permanent ID such as bangs or EID tag or breed tattoo. Rabbits require a permanent ear tattoo.
Swine-swine nomination forms are due to the office by April 28. Tags must be picked up prior, animals must be tagged, tags and ear notches must be recorded on provided sheet, and pictures of each animal must be taken clearly showing tags and all notches and submitted by
Horse-must be nominated in 4-H Online by May 1. Pictures should

be taken without the saddle, from each side and show markings on the face.
Market Poultry and Rabbits-June 20. Nominated in 4-H Online. Must submit pictures and proof of purchase. Poultry must be possessed by June 20. Rabbits must be located and purchased by June 20, but can be possessed between June 20 and July 5.

Meat Quality Assurance/Pork Quality Assurance

All Logan County 4-H members showing beef, goats, poultry, rabbits, sheep or swine must attend MQA.
Swine members must not only meet MQA requirements, but they must carry a PQA card as well. The National Pork Board requires that 4-H members showing swine attend MQA yearly from 4-H age 8-12 to get a card. At age 12, members may attempt

to take a 3 year certification test. This is in addition to the MQA test. If they pass, they return at 15, if not, they need to return to MQA at 13 and keep taking it yearly. If they receive a 3-year certification, they will return at 15 to attempt another 3-year test. If they do not pass, MQA must be attended on a yearly basis no matter their age.



All members in livestock projects must file for a Colorado Premise Location ID number. You can apply for one online by visiting <https://www.colorado.gov/pacific/aganimals/traceability>

E-Record Books

All 4-H Livestock/Horse members are required to complete a record book. They can be found online at http://www.colorado4h.org/project_resources/erecords/index.php. They can be done on the computer in Excel or by hand in Adobe, just make sure they are legible.
Up to date record books are required to show at county fair. Up to date record books will be required to be turned in with fair entries on July 14. Information on what is up to date is on the Logan County Extension Website.

Any member who has a record book deemed not up to date will be given a small window of time (days) to fix their record book and remain eligible. If they do not fix their book, they will not be allowed to show at county fair.
Record books will be returned at check-in at fair when members pick up their stall cards and parking pass. Record books will then be due to the office completed for final grading the Friday following fair, which will be August 18th.
Members will be required to

score a 70% to complete. Those not reaching 70% will be required to attend a record book training workshop in the fall to complete their project. All members are encouraged to attend the E-record Book Workshop on April 27 so they know how to fill them out.
Any member who fails to complete their project (by not meeting any of the 4 complete project requirements) is ineligible to show that project the following 4-H year.



Enrollment

All 4-H and FFA members must be enrolled by February 1, 2017 in order to be eligible to participate in the 2017 Logan County Fair.
If you need literature books for your project, please make sure you click that box in 4-H Online so we know to order project literature for you.

The add/drop deadline for projects is April 1. We cannot make any changes after that date. Please be diligent about making sure you have enrolled in the right project prior to that date.
If you do not know if you enrolled in the correct project (i.e. market vs. breeding poultry),

please call Kacy and see which you should be in.
If you have concerns about being able to complete a project or participate, it may be best to drop the project for this year, and enroll in it next year when you are sure you can meet all the requirements.

Attitude is the
difference between
an ordeal and an
adventure

Catch-It

In order to participate in a Catch-It program, you must fill out an application in our office the summer prior. Applications for the following year are always due on the same day as fair entries. In order to be eligible, you must not have previously shown that species of animal. It is open to any member who wants to show a goat, hog or

lamb for the first time. You can apply to one catch-it program a year. Members are required to attend the catch at the current fair, a seminar on the species, complete a separate record book, and attend an interview the year they show along with writing sponsorship letters to the people who provided the funds for their animal.. A fee of

\$25 is required to participate if the animal is fully sponsored, otherwise the member will be required to pay for half the cost of the animal. A project visit will be done by Kacy to make sure that the animal is being properly taken care of and everything is going well.



All members showing animals must provide an Animal Care and Housing Form to the Extension Office by February 1st of the current 4-H year indicating where their animals will be located and how they will be cared for.